

*Building Critical Scientific
Infrastructure for Key Societal Issues*

Significant questions are centered on our ability to assess change.

- Climate change
- Habitat conversion
- Pollutants
- Introduction of exotics
- Loss of biotic diversity
- Emerging pathogens & diseases

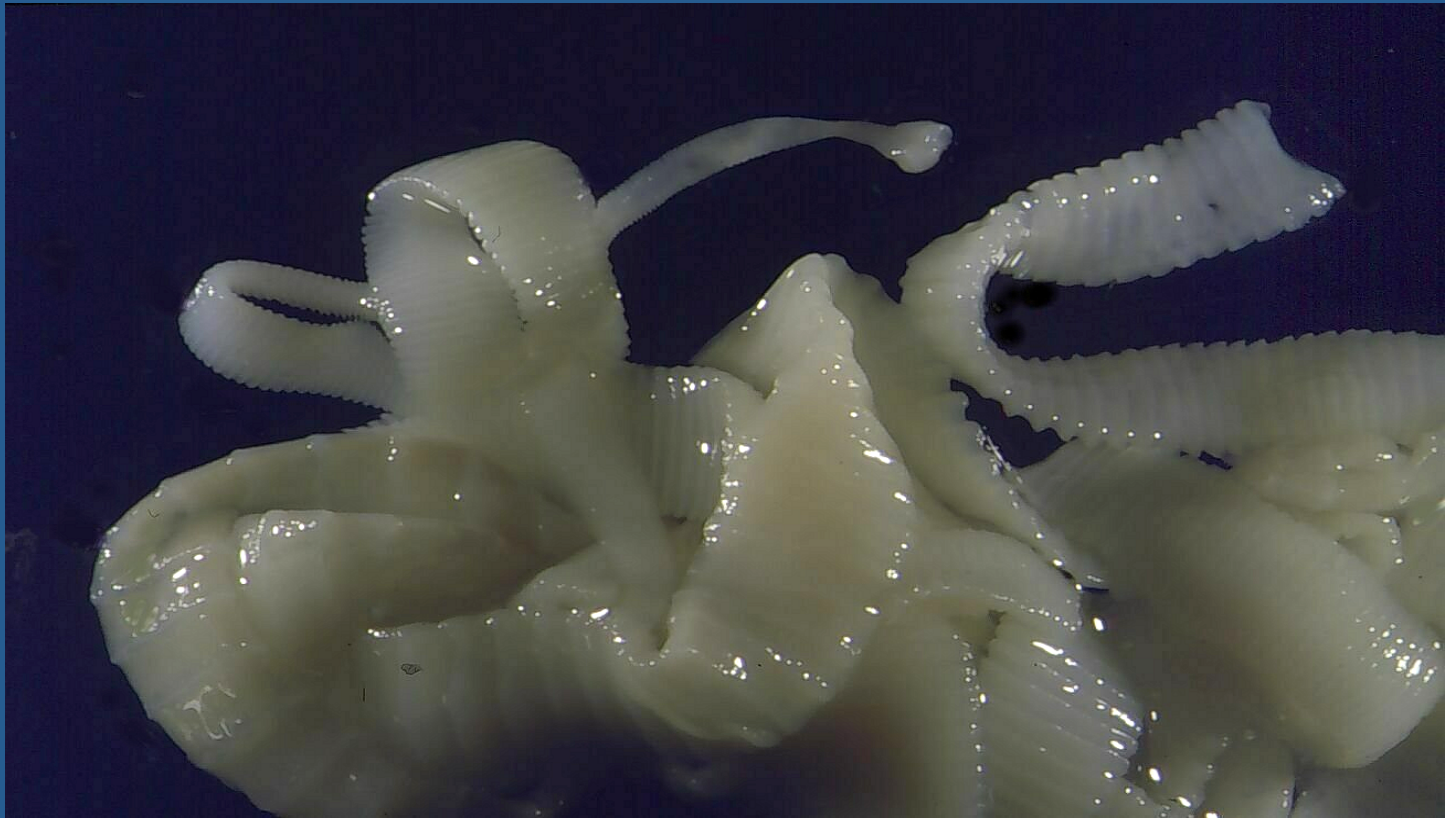


Baseline or historical information is crucial to documenting changing environments and emerging pathogens

Building Critical Scientific Infrastructure for Key Societal Issues

- Integrated Archives
- Building Human Capacity
 - Broadening Participation
 - Revitalizing Biology Undergrad Education
 - New Generation of Museum Professionals
- Growth of Collections (not just digitization)
 - Unintended Consequences
- Think Bigger!

Integrated Archives: Training, Research, Surveillance, Management and Communication



Integrated Archives

- Temporally Deep
- Geographically Broad, Site Intensive
- Geo-referenced
- Multiple Datasets tied to central voucher specimen
 - Frozen Materials for Molecular Biology
 - Parasites tied to Hosts
- Searchable Web-based Databases
 - Research, Policy, Education

ATTENTION

IF YOU HAVE A
FEVER ALONG WITH
MUSCLE ACHES AND
PAINS, PLEASE STAY
IN YOUR CAR AND
WE WILL EXAMINE
YOU THERE.

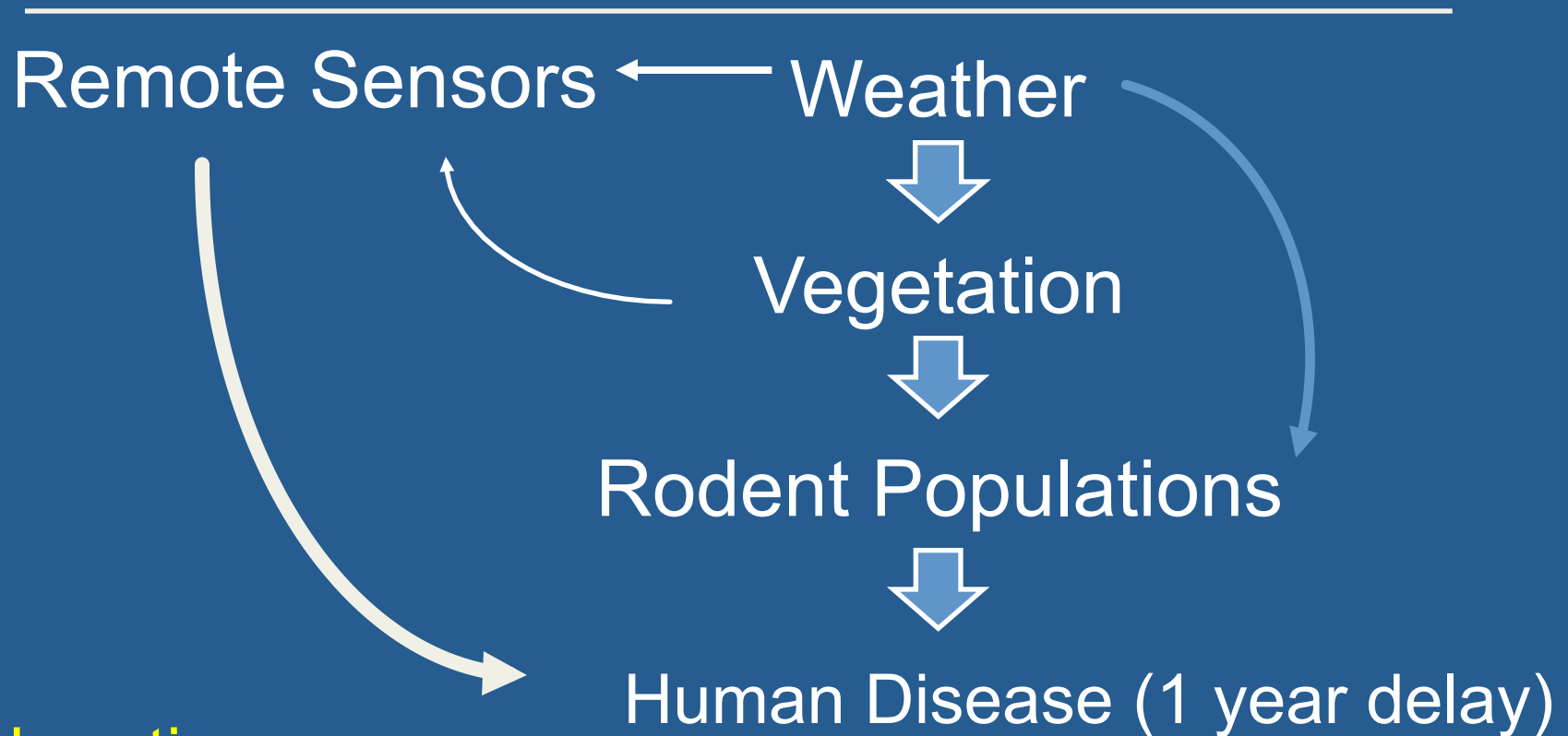
Ca. 75% of human pathogens are zoonotic
1993 > 20 deaths, from unidentified pathogen
Mostly young & rural



Terry Yates
Field work—integrated archives
Unintended Consequences



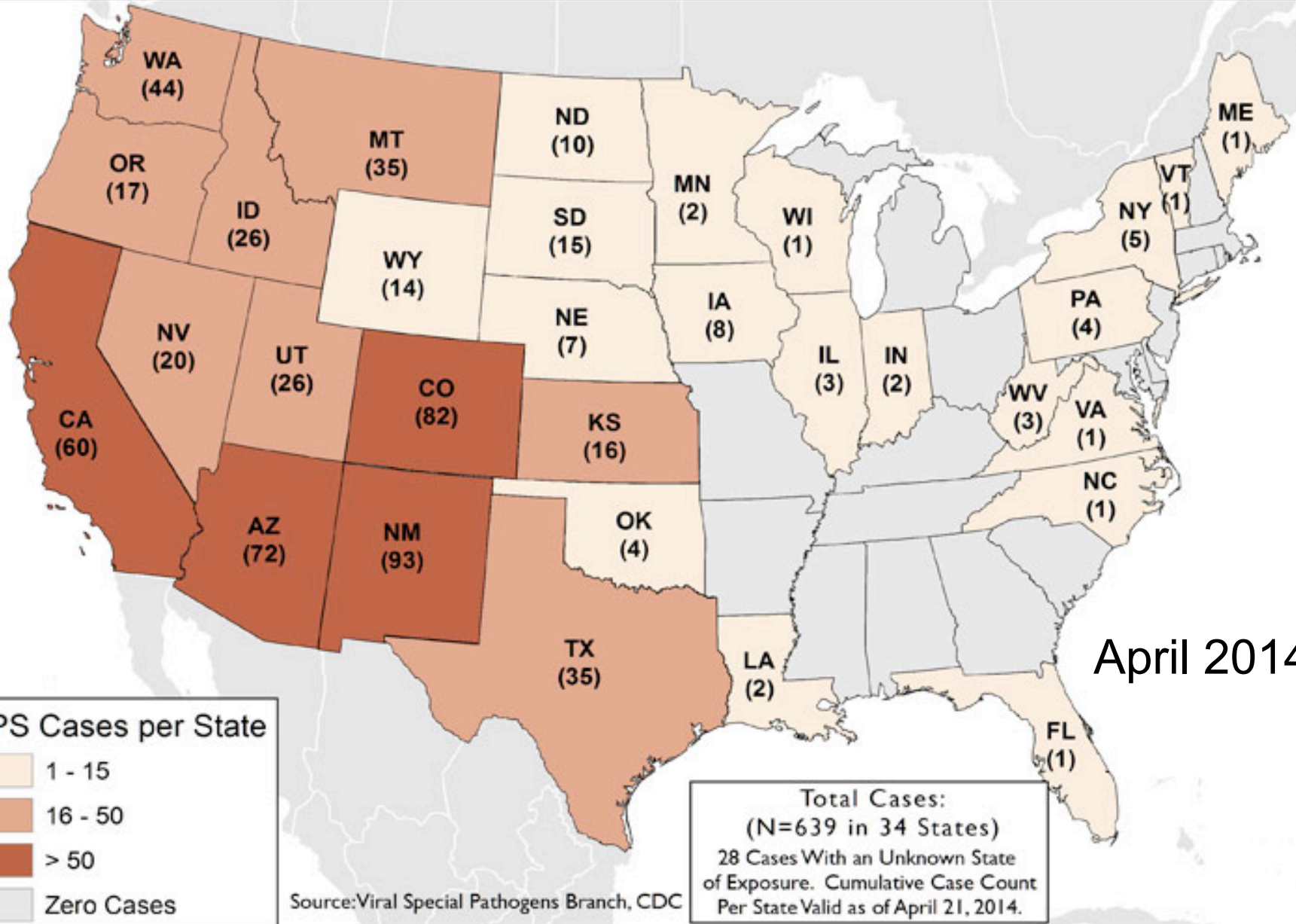
Reservoir studies → Predictive models

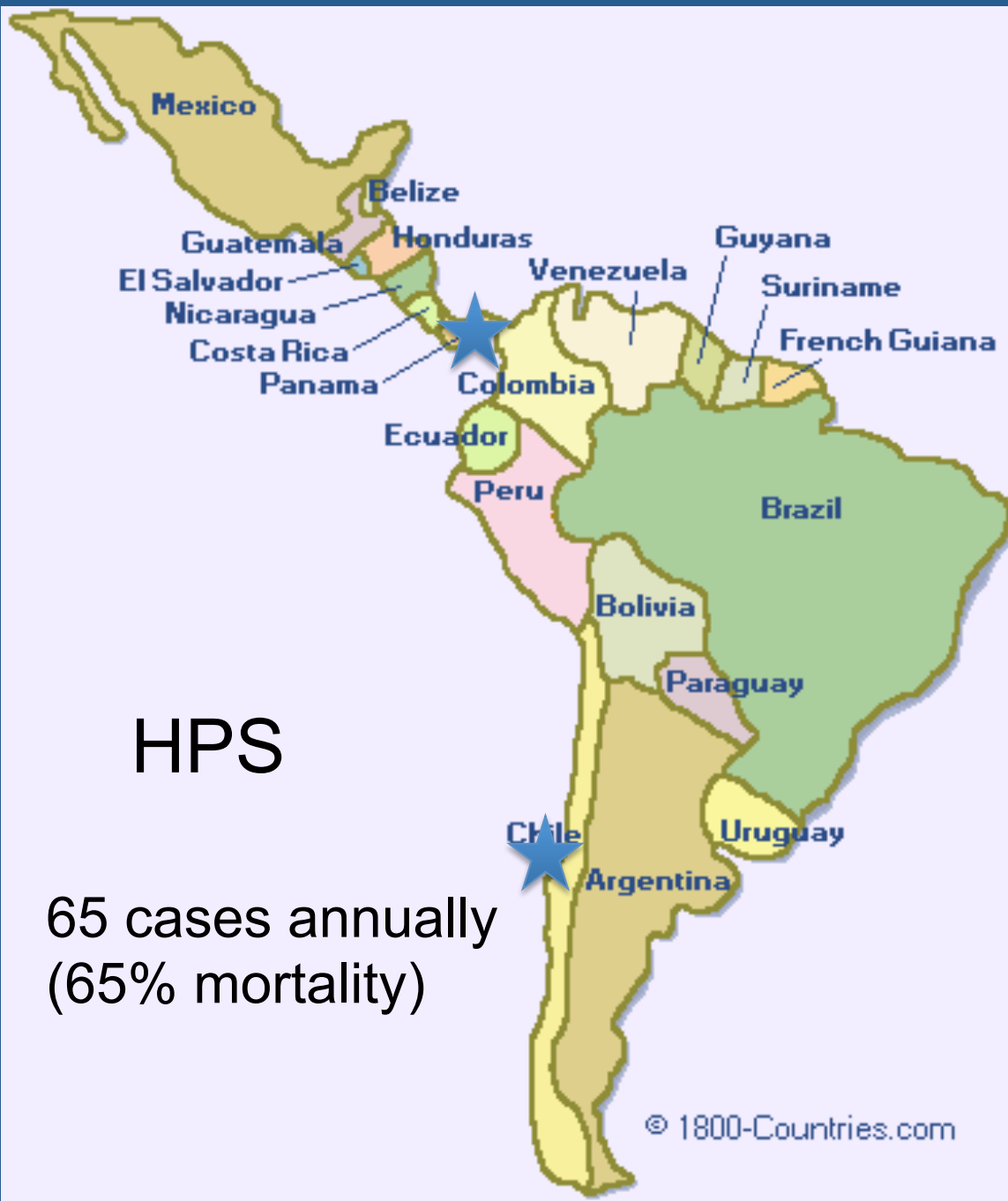


Collaborations:

Systematists, Virologists, Public Health,
Geographers, Ecologists, Behavioral Biologists, etc

Hantavirus Pulmonary Syndrome (HPS) Cases, by State of Exposure





HPS

65 cases annually
(65% mortality)

Phylogeny of Hantaviruses (1998)

Virus Strain

Rodent Host



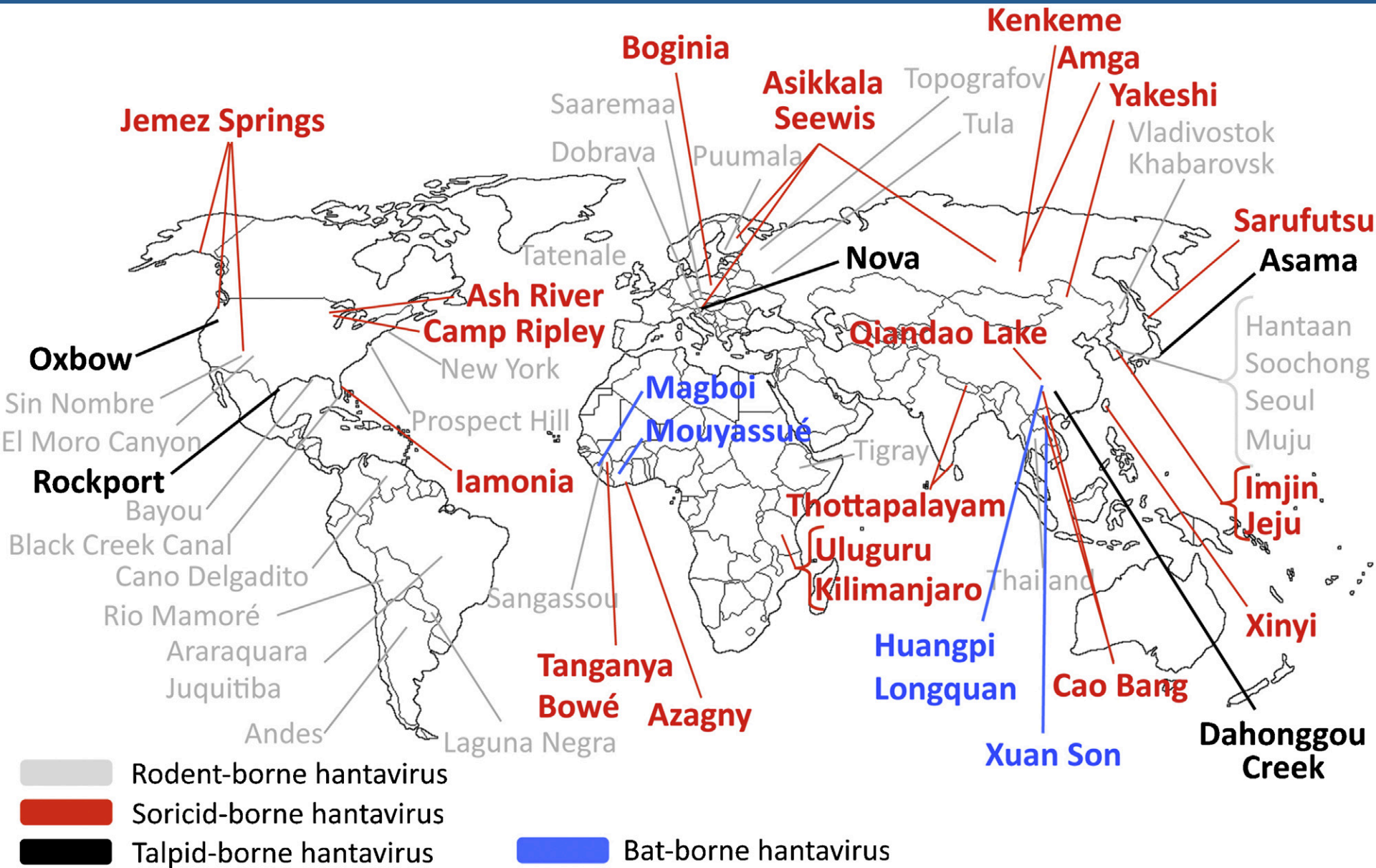
New World Hantaviruses-in 2003



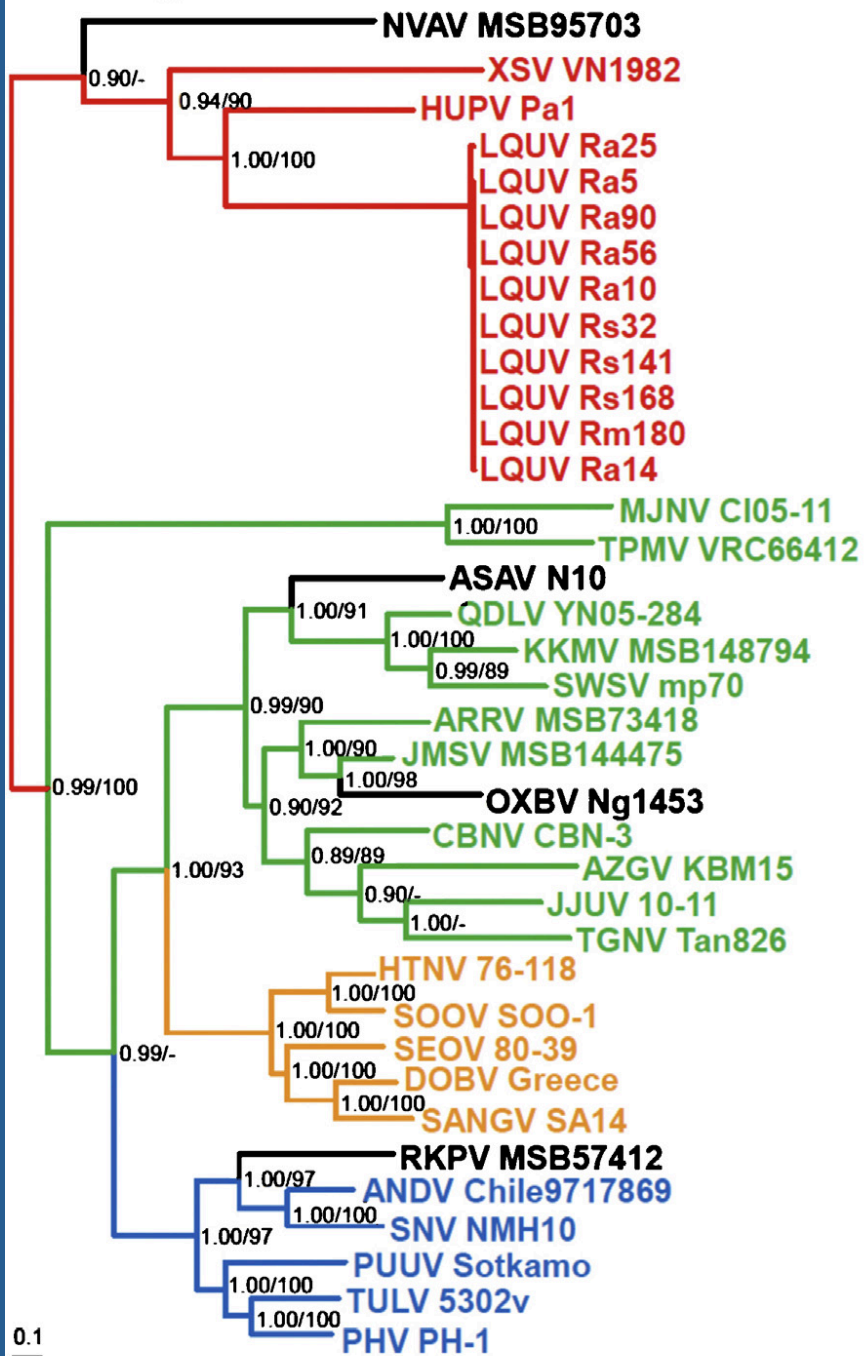
Many new hosts for new Hantaviruses

New discoveries possible with deep, integrated specimen archives

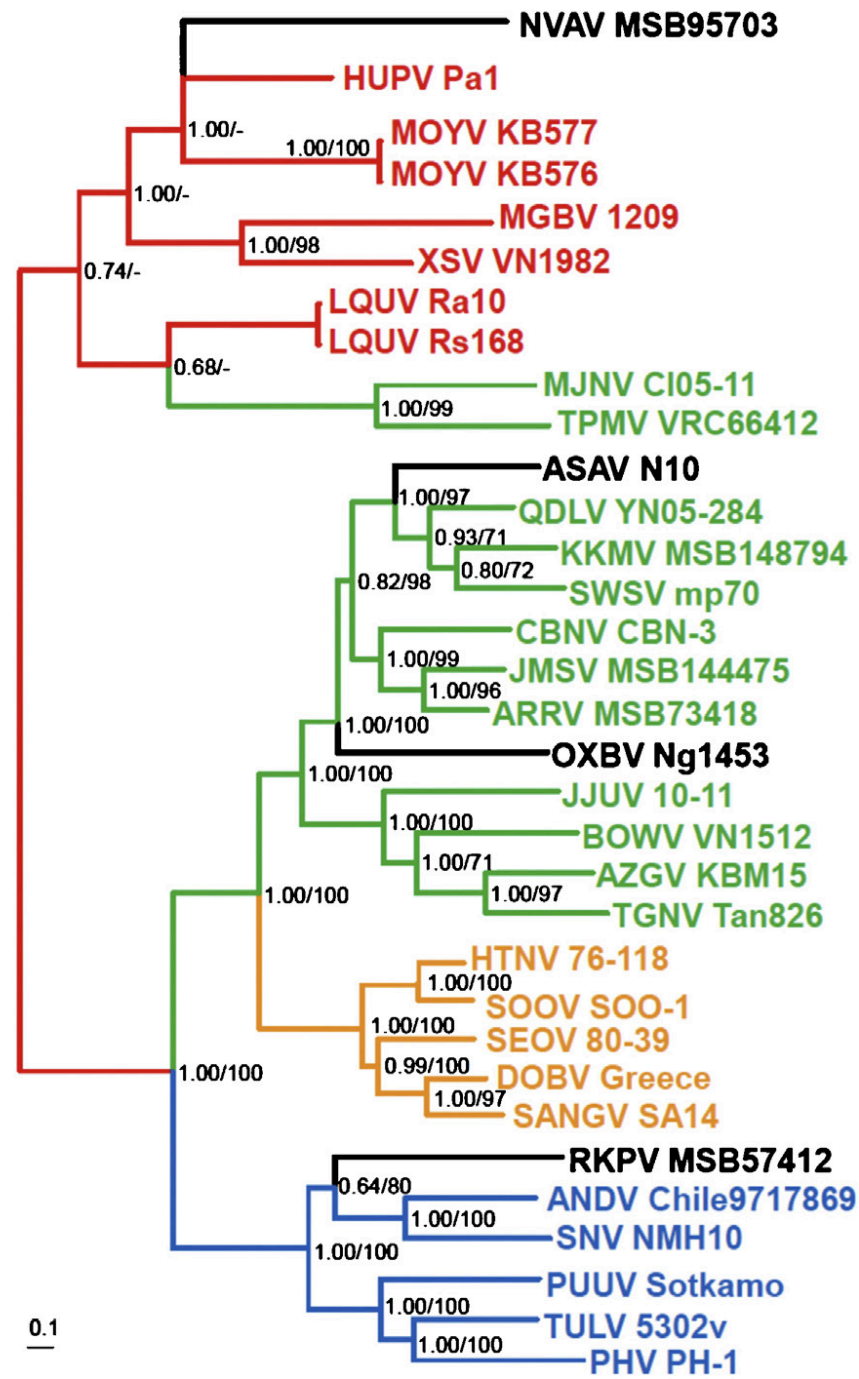
Hantavirus Discovery----multiple mammalian hosts



S segment



L segment



What is the Time-Scale of Hantavirus Evolution?



Zhang, Y-Z., Holmes, E.C.,
2014.

What is the Time-Scale of
Hantavirus Evolution?
Infection, Genetics and
Evolution

2000 years to 50 million years?

Building Critical Scientific Infrastructure for Key Societal Issues

- Integrated Archives
- **Building Human Capacity**
 - **Broadening Participation**
 - **Revitalizing Biology Undergrads**
 - **Next Gen Museum Professionals**
- Growth of Collections (stimulated by digitization)
 - Unintended Consequences



Stimulate change in biology education

Vision and Change—AAAS (2009)

PULSE – (2012) Partnership for Undergraduate Life Sciences Education (NSF, HHMI and NIH)

40 Leadership Fellows

PCAST (Feb 2012) Engage to Excel

Advocate and provide support for replacing standard laboratory courses with discovery-based research courses.

What do collections-based approaches add to undergrad education?

- Scale—time and space
- Integration
 - biotic and abiotic
 - genomic to organismal to ecosystems
- Complexity-multiple views
- Web-based Discovery
- Database exposure
- Scientific Process
 - Experiential vs passive



Challenges



- Few educators (& fewer students) seem to know:
 - about natural history collections
 - or their role in development of key concepts
 - how to access museum information
 - how to incorporate specimen data in teaching

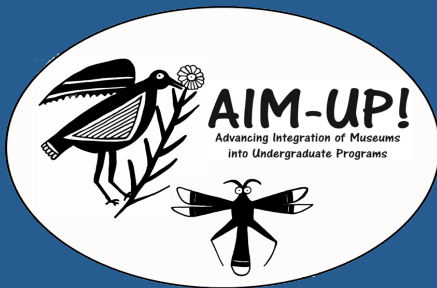
A Few More Challenges



- Collections (and databases) have limitations
 - Specimen availability
 - Narrow view of possibilities
 - **Systematics**, now to other disciplines
 - (samples plus time and space stamps)
 - “Unintended Consequences”
 - Collections developed for **research**,
 - How do we unleash potential for teaching?
 - (formal and informal)
 - Databases developed for **collection management**, not education or outreach.

RCN-UBE

- RCN-Undergraduate Biology Education
---focuses on improved participation and learning in undergraduate biology curricula.



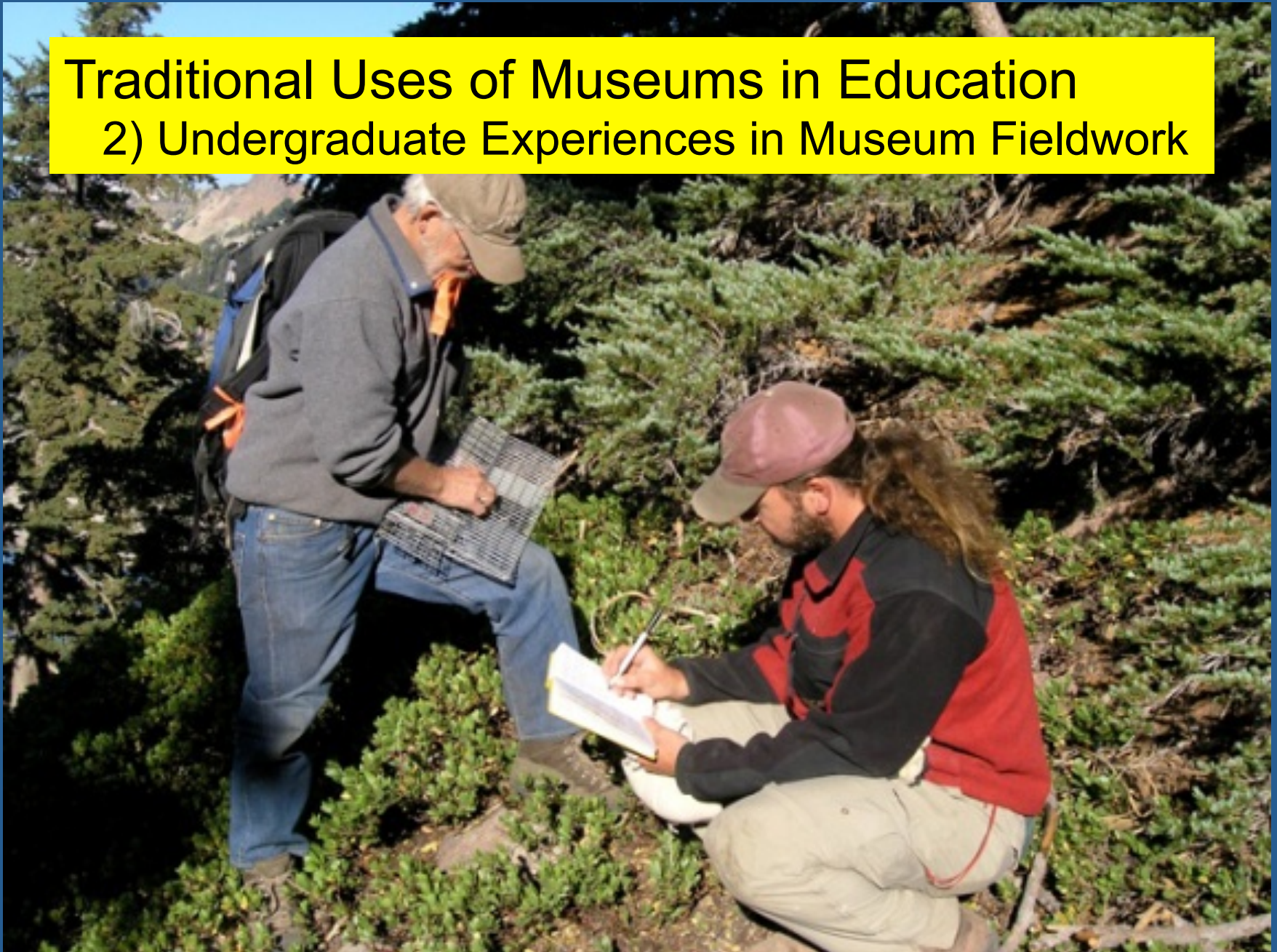
Traditional Uses of Museums in Education

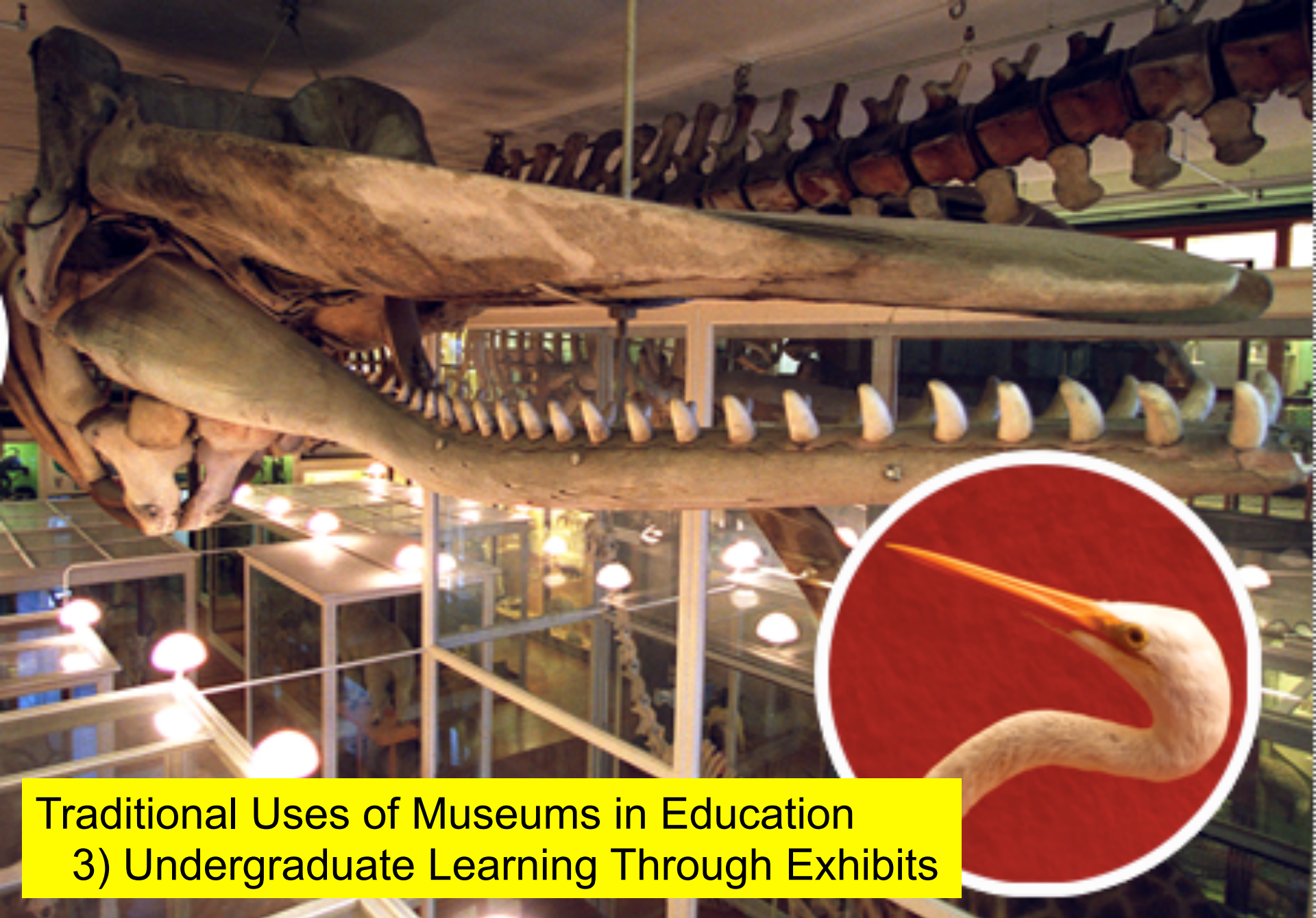
1) Undergraduate Experiences in Curation



Traditional Uses of Museums in Education

2) Undergraduate Experiences in Museum Fieldwork





Traditional Uses of Museums in Education
3) Undergraduate Learning Through Exhibits

Traditional Uses of Museums in Education

4) Research Experiences Based on Collections

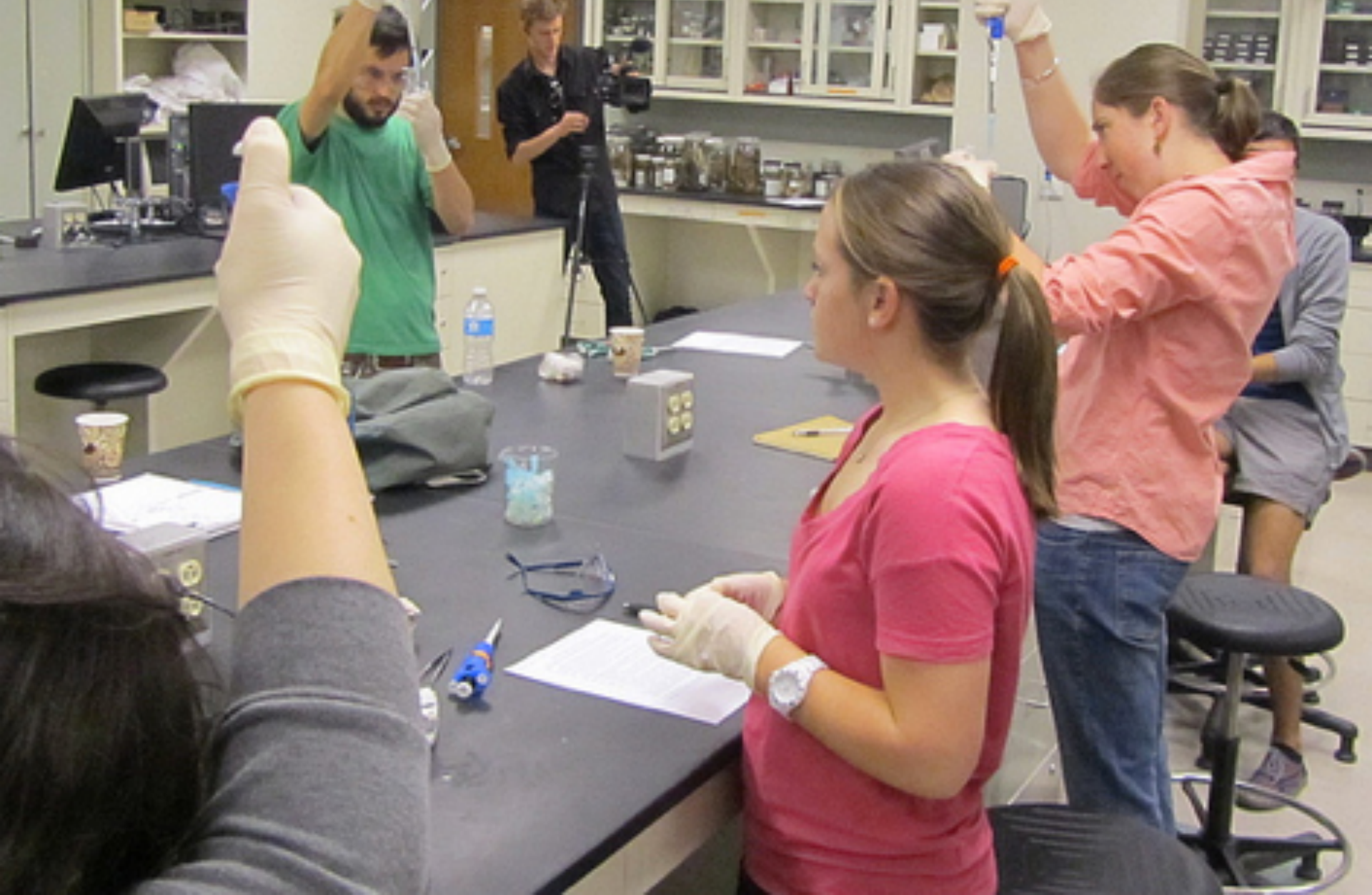




Traditional Uses of Museums in Education
5) Specimens Used in Classrooms

Newer Uses of Museums in Education

Specimens Used in Classrooms

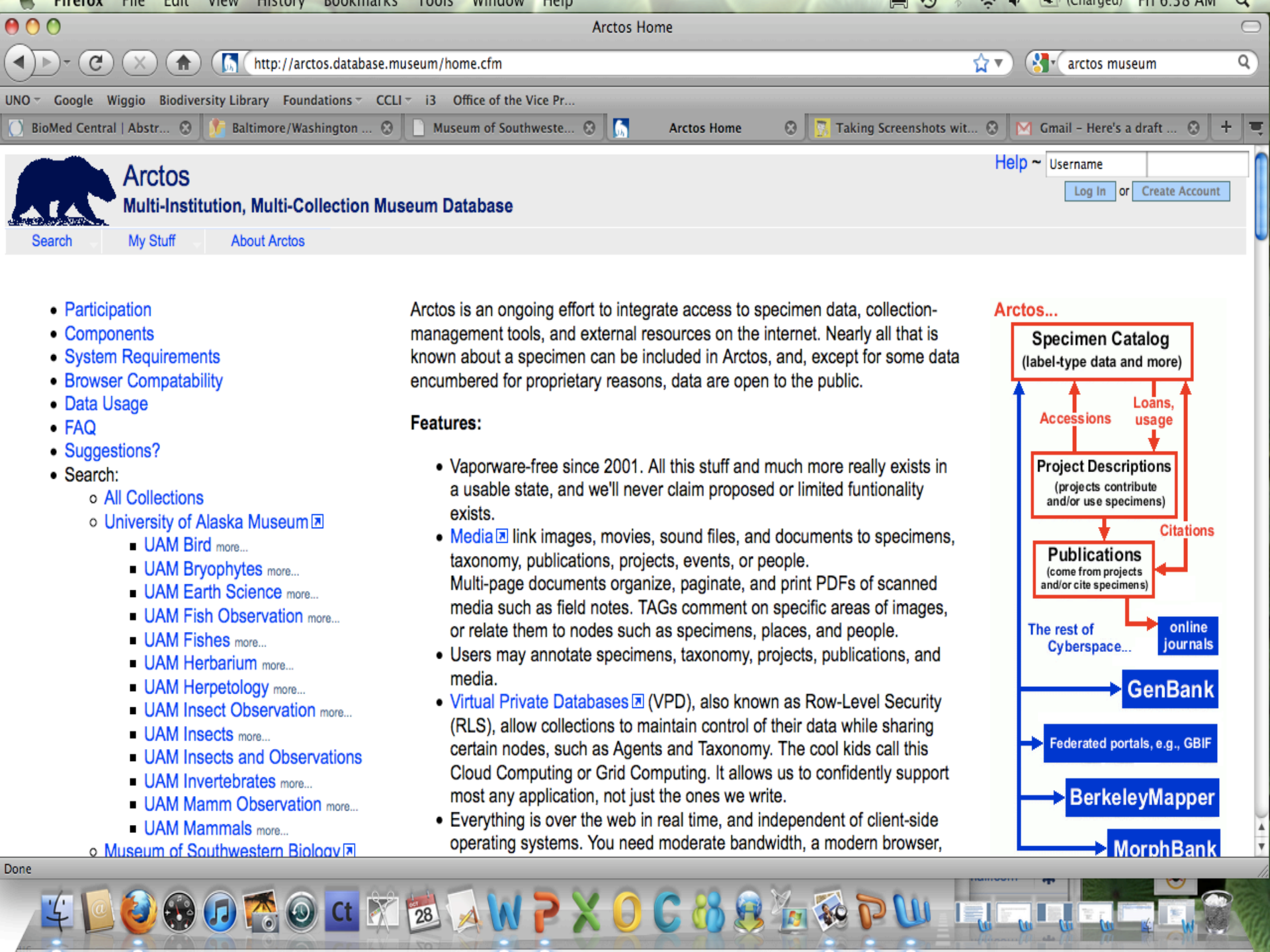


NSF-RCN

Research Coordinating Network

- Goal: create new directions in research & education by communicating and coordinating activities across disciplinary, organizational, geographic and international boundaries.
- Crossing Taxonomic Borders
- Educators-Museum Staff
- Biologists-Education Specialists
- Informatics--Databases
- Art and Geography
- Others (GenBank, Agencies)





Arctos

Multi-Institution, Multi-Collection Museum Database

Help ~ Username
 or

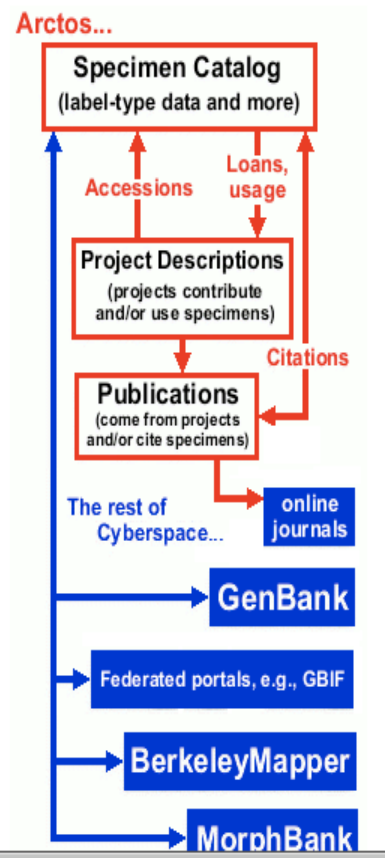
- Search
- My Stuff
- About Arctos

- [Participation](#)
- [Components](#)
- [System Requirements](#)
- [Browser Compatability](#)
- [Data Usage](#)
- [FAQ](#)
- [Suggestions?](#)
- Search:
 - [All Collections](#)
 - [University of Alaska Museum](#)
 - [UAM Bird](#) more...
 - [UAM Bryophytes](#) more...
 - [UAM Earth Science](#) more...
 - [UAM Fish Observation](#) more...
 - [UAM Fishes](#) more...
 - [UAM Herbarium](#) more...
 - [UAM Herpetology](#) more...
 - [UAM Insect Observation](#) more...
 - [UAM Insects](#) more...
 - [UAM Insects and Observations](#)
 - [UAM Invertebrates](#) more...
 - [UAM Mamm Observation](#) more...
 - [UAM Mammals](#) more...
 - [Museum of Southwestern Biology](#)

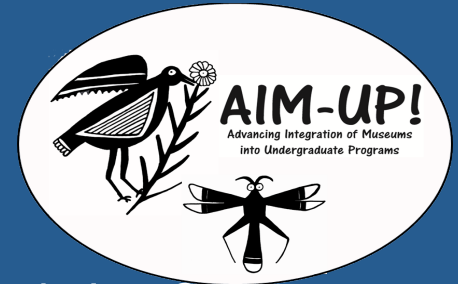
Arctos is an ongoing effort to integrate access to specimen data, collection-management tools, and external resources on the internet. Nearly all that is known about a specimen can be included in Arctos, and, except for some data encumbered for proprietary reasons, data are open to the public.

Features:

- Vaporware-free since 2001. All this stuff and much more really exists in a usable state, and we'll never claim proposed or limited functionality exists.
- [Media](#) link images, movies, sound files, and documents to specimens, taxonomy, publications, projects, events, or people. Multi-page documents organize, paginate, and print PDFs of scanned media such as field notes. TAGs comment on specific areas of images, or relate them to nodes such as specimens, places, and people.
- Users may annotate specimens, taxonomy, projects, publications, and media.
- [Virtual Private Databases](#) (VPD), also known as Row-Level Security (RLS), allow collections to maintain control of their data while sharing certain nodes, such as Agents and Taxonomy. The cool kids call this Cloud Computing or Grid Computing. It allows us to confidently support most any application, not just the ones we write.
- Everything is over the web in real time, and independent of client-side operating systems. You need moderate bandwidth, a modern browser,



AIM-UP!--the network



PIs -- Eileen Lacey, Scott Edwards, Stefanie Ickert-Bond, Joe Cook

Universities, Community Colleges and Tribal Colleges:

U Alaska, UC Berkeley, Harvard U, U New Mexico

U Michigan, Texas A&M, U Texas, U Colorado, U Arizona, U Kansas, UAS, UAA, CNM, NM Highlands University, Ohio State U, Occidental College, Northern Arizona University, U of Florida, Massachusetts College of Liberal Arts, University of Idaho, Arizona State U, Oglala Lakota

Agencies and Free-standing Museums: USDA National Parasite Lab, USGS Molecular Ecology Lab, USNM, Denver Museum of Nature & Science, NY State Museum

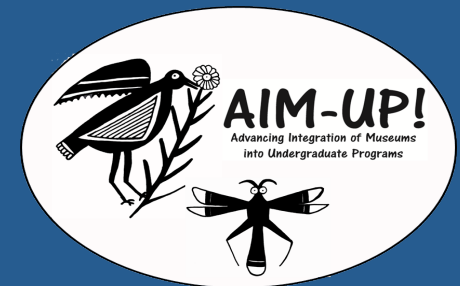
International: U Guelph, U Nacional Montevideo,

Extension to High Schools and Citizens: Highland High (urban) and Sitka High (rural)



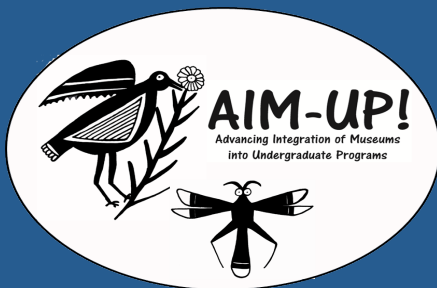
Annual Conceptual Themes:

- 1) Integrative Inventories: Exploring Complex Biotic Associations Across Space and Time (MSB)
- 2) Making Sense of Geographic Variation (UAM)
- 3) Evolutionary Dynamics of Genomes (MCZ)
- 4) Biotic Response to Climate Change (MVZ)
- 5) Coevolving Communities and the Human Dimension (MSB)



5 Annual All-Hands Meetings

- Exchange Perspectives on Teaching about *Climate Change and the Museum*
- Explore Educational Modules & Dissemination
- Evaluation



Workshops & Seminars



- 1) Fluid Taxonomy -- on the dynamic practice of classification (Susan Anker)
- 2) Cataloguing Wonder -- collecting through the senses (Brandon Balengée)
- 3) Morphology and Evolution -- investigating change in nature and culture through place and time (Brian Conley)

Art and Natural History Collections



Educational Modules

Island Biogeography: Species Richness Across a Northern Archipelago



Key Concepts and Skills: Evolution & Ecology

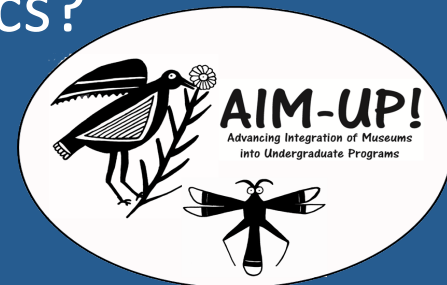
- Body size on islands
- Competitive exclusion/release
- Isolation and Divergence
- Island biogeography

Conservation biology
Scientific process & hypothesis testing
Statistical methods
Management & analyses of large-scale databases

Evolutionary Genomics and the Museum

Potential Topics for Educational Modules

- Tree of Life
- Spatial and Temporal Genetic Variation
- Scientific Process (Replication--without vouchers, difficult to impossible)
- Connecting Big Data (GenBank to GIS Applications)
- Genes and Developmental Biology
- Are Museums Supermarkets for Genomics?
- Founder Effects, Island Syndrome



Climate Change Educational Modules

- With warming conditions individuals/populations
 - Move
 - up in elevation—(Grinnell Project)
 - to higher latitudes (musk-ox parasite)
 - Explore Velocity of Change
 - Species distributions
 - Niche envelopes
 - Adapt
 - Life history changes
 - Phenology

Products

- **Better Understanding of Existing Programs**
- **Survey of Educators and Students**
- **Stimulate Interdisciplinary Use of Specimens**
- **Publications—**
 - Perspectives, Surveys, Educational Venues, Texts
- **Educational (Dispersion) modules** centered around themes

Grow the Community of Users

Challenges for Museums

- Natural History Collections need to..
 - Grow
 - Large sample sizes, well distributed over time and space
 - Integrate Multiple Data Sets
 - standard specimens & frozen tissues
 - parasites and hosts
 - Implement Protocols to Facilitate Material Availability
 - Networks for connecting managers, scientists, general public
 - Cyberinfrastructure for Informatics (GIS, GenBank)
 - Train Future Investigators
 - Cutting Edge Research
 - Respond to Societal Needs



Natural History

SPECIMEN DATABASES (www)

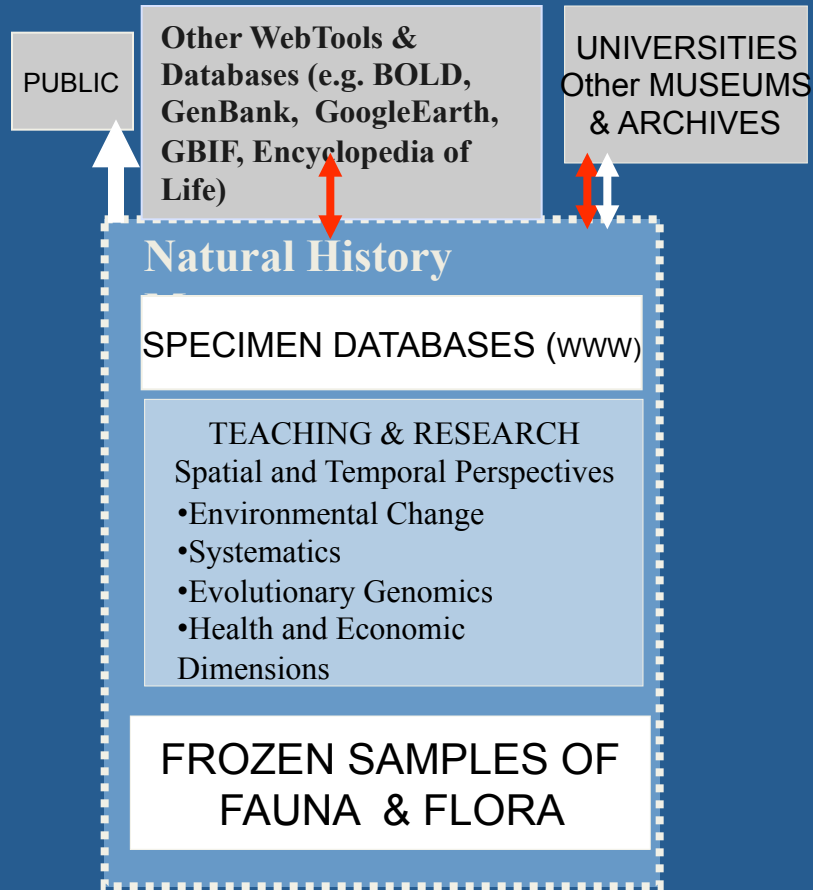
TEACHING & RESEARCH

Spatial and Temporal Perspectives

- Environmental Change
- Systematics
- Evolutionary Genomics
- Human Dimensions

FROZEN SAMPLES OF
FAUNA & FLORA

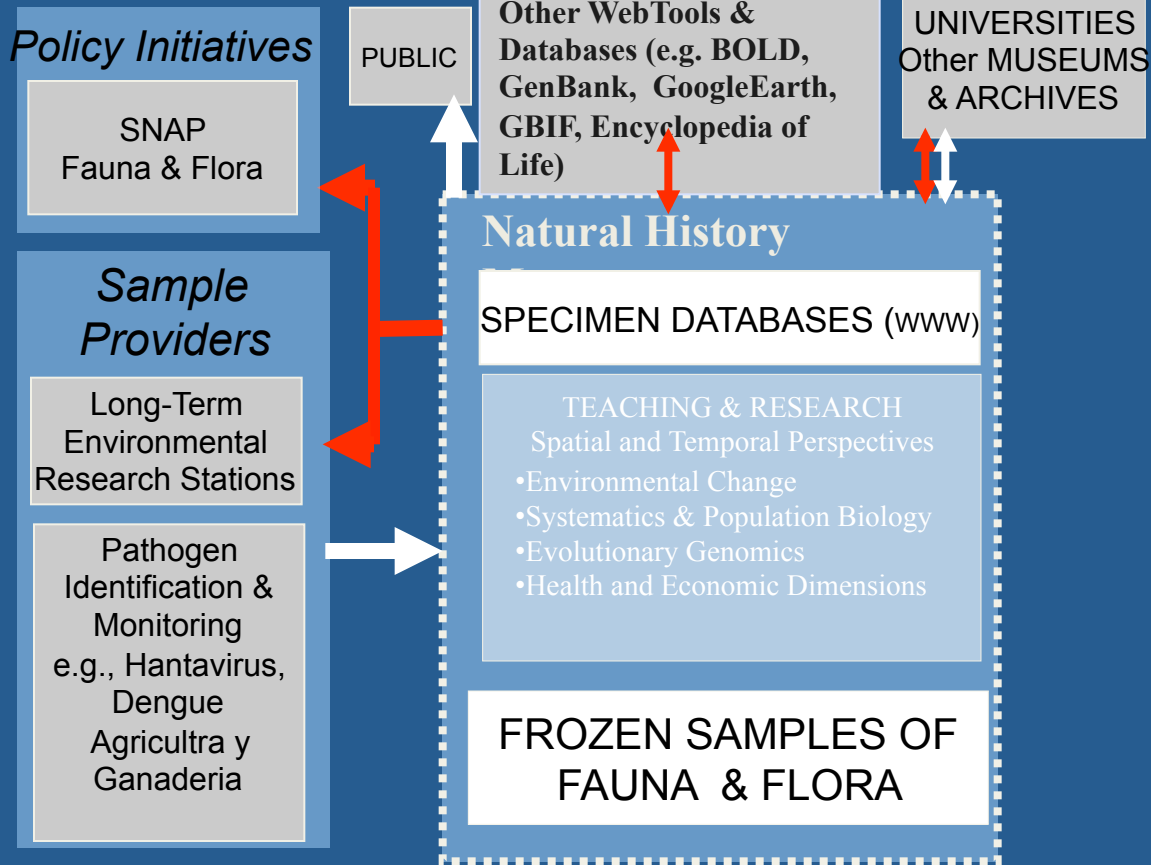
A Museum Approach
to Observatories



→
specimens & samples

→
specimen data and
project metadata

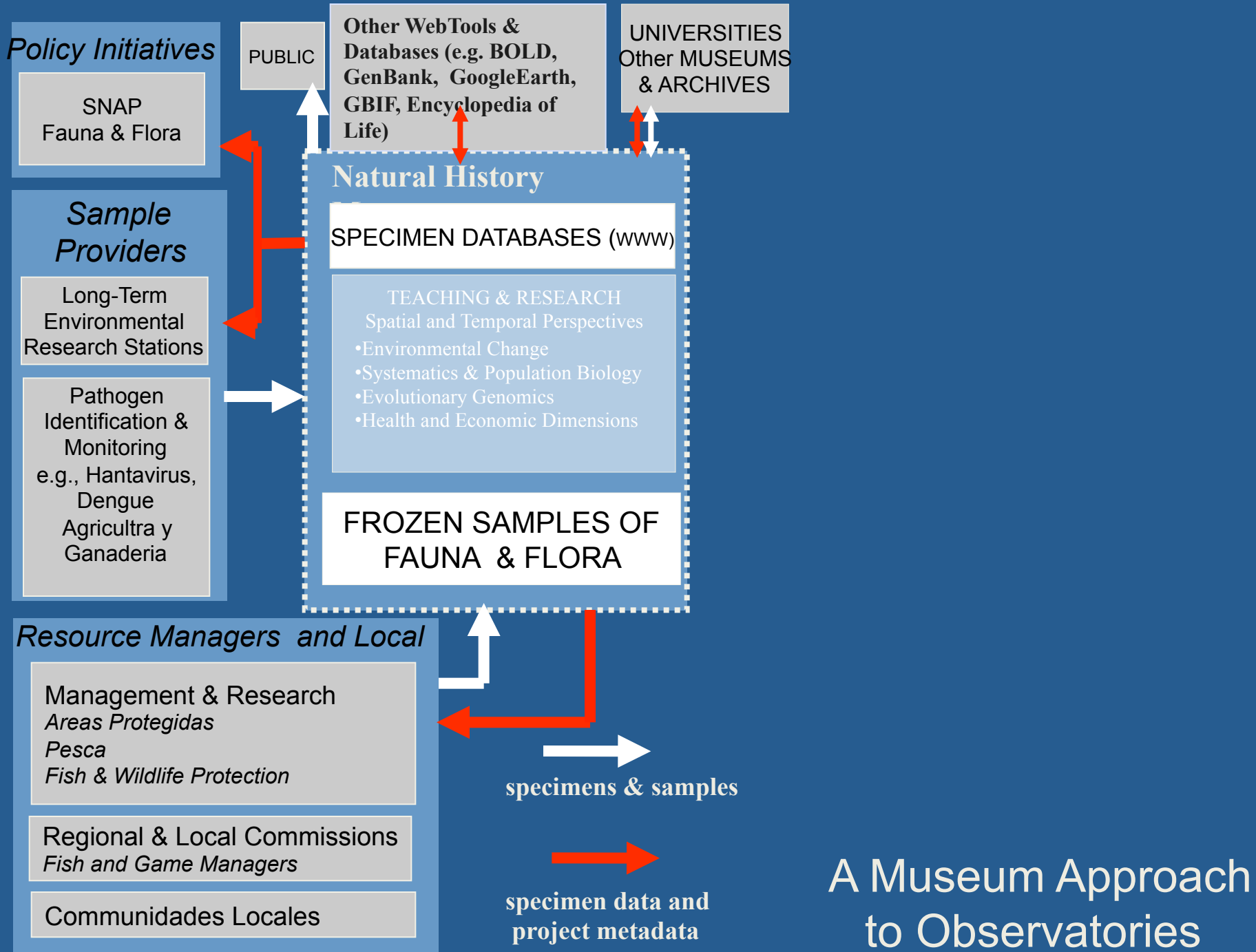
A Museum Approach
to Observatories

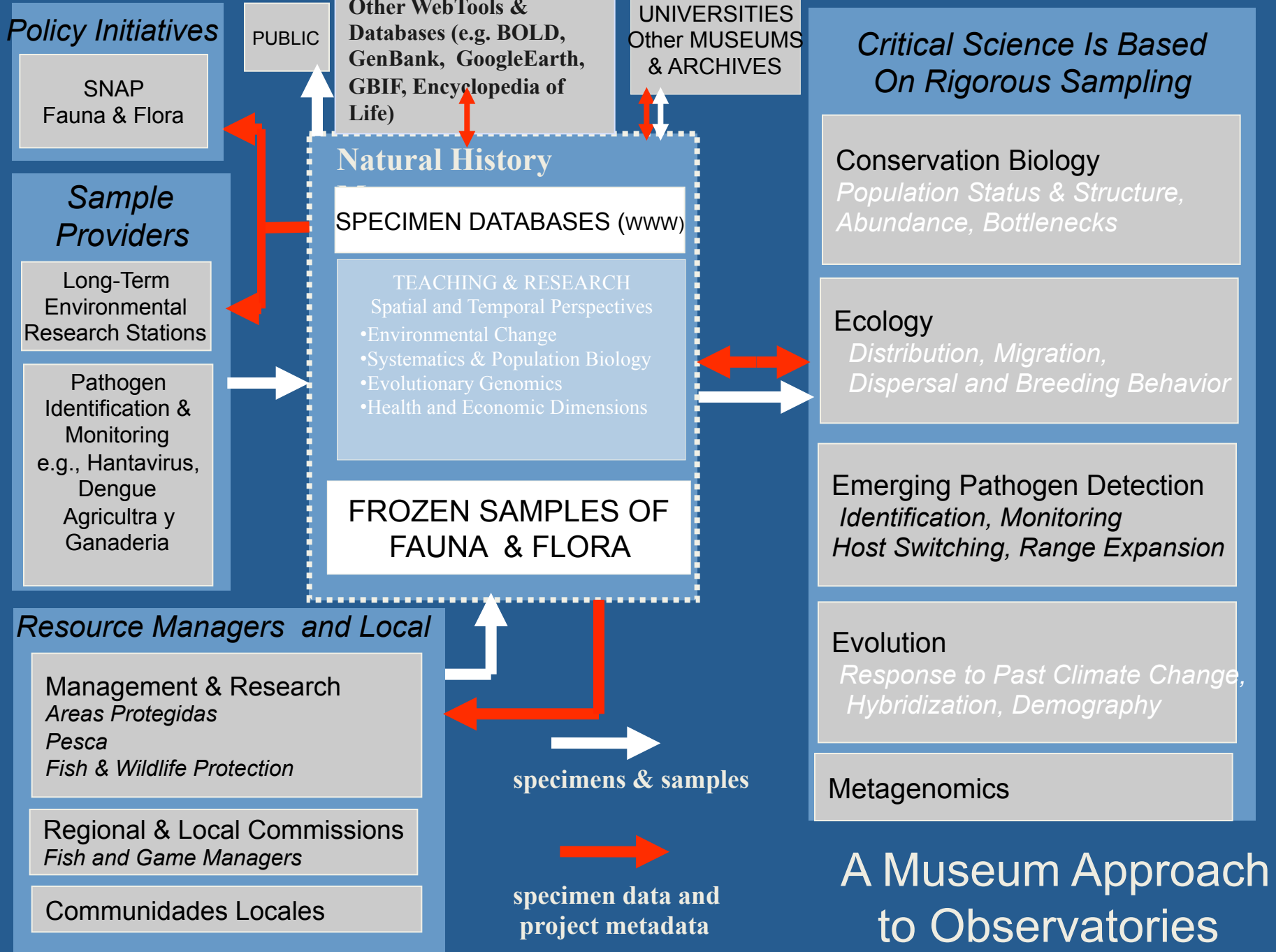


specimens & samples

specimen data and project metadata

A Museum Approach to Observatories





"At this point I wish to emphasize what I believe will ultimately prove to be the greatest value of our museum. This value will not, however, be realized until the lapse of many years, possibly a century, assuming that our material is safely preserved. And this is that the student of the future will have access to the original record of faunal conditions in California and the west, wherever we now work."

Joseph Grinnell, 1910

"The Uses and Methods of a Research Museum"

Popular Science Monthly

